



Get ready for an extraordinary Christmas party at the Arctic! This year, we're introducing an exciting new water play zone that promises non-stop fun and thrills for the whole family! Zoom down an electrifying water slide and make a splash into a refreshing pool! If you prefer to stay dry, bounce to your heart's content on 3 gigantic bouncy castles that will leave your little ones giggling with joy. Gear up with us to celebrate this X'mas with a Splash!

ADMISSION PRICE

DRY + WET ZONE

Single Ticket	\$25
Buddy Bundle 2 pax	\$45
Family Bundle 4 Pax	\$85

DRY ZONE ONLY


Single Ticket	\$20
Buddy Bundle 2 pax	\$36
Family Bundle 4 Pax	\$68

Each ticket admits 1 pax (child/adult) for 1.5 hours play time. Bring along your swimwear to enjoy water play. Free entry for children below 1 year old with paying adults.

OPERATING HOURS

MON - THURS	2PM TO 9PM
FRI - SUN & PH	10AM TO 10PM

EXCLUSIVE 20% OFF FOR POSB Everyday Cardmembers
 Applicable for all ticket types



PROMO CODE: PEDSPASH

SCAN TO BUY NOW!



*Last admission for Mon-Thurs: 8pm, Fri-Sun & PH: 9pm.

HAVE A SPLASHING GOOD TIME!



1. DRAGO'S GLACIER FALLS

Nestled amidst the glistening snow and standing at a towering height, glide down Drago's Glacier Falls and take a plunge into crystalline waters!

2. RABY'S MAGICAL FORTRESS

Step in Raby's Magical Fortress and have a playful snowball fight with pals from the Arctic. Don't forget to grab a selfie with them to remember your adventure!

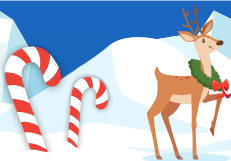


3. HAPPY'S IGLOO KINGDOM

Swing by the South Pole and drop by Happy's Igloo Kingdom. Navigate your way through exciting obstacle courses, snow slopes and keep a look out for adorable penguins!

4. ELI'S SKI LODGE

Go on a climbing expedition and take in panoramic views of the Arctic. Race down winding slides of Eli's Ski Lodge and feel the rush of cold air as you descend!



Official
Ticketing Partner:



Official
Event Partner:

